



Human-Centred Design

We believe that the future of sustainable design lies in an approach that puts the health and wellbeing of individuals and ultimately, society, at its heart.

Wellbeing

The subject of wellbeing in the built environment is something we have been increasingly focused on. We spend around 90% of our lives in buildings and these environments significantly impact our health and wellbeing, and ultimately our productivity and performance.

Places for people

As designers we are ultimately driven by a desire to improve the quality of the environment – with design as a catalyst to improve human interaction and experience.

Atkins acknowledges the inherent importance of the user experience as part of a successful building solution. We also understand the impact the built environment has on people. We shape buildings and they then shape us. So we're committed to designing and delivering buildings that improve the health and wellbeing of the people that inhabit them.



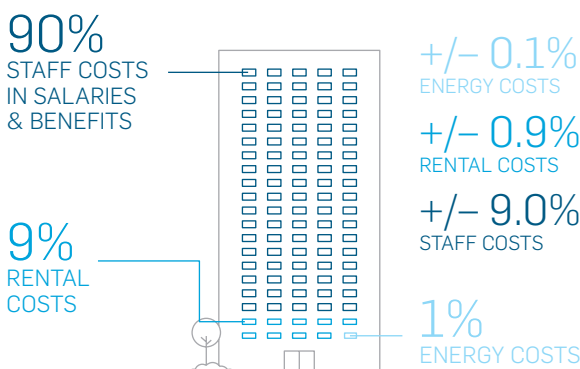
Financial impact of wellbeing

For companies there's a real financial and people benefit. Ninety percent of a company's operating costs go on staff (see diagram below), so if we can improve staff performance by improving staff wellbeing, even by a small amount, we can improve a company's fortunes significantly.

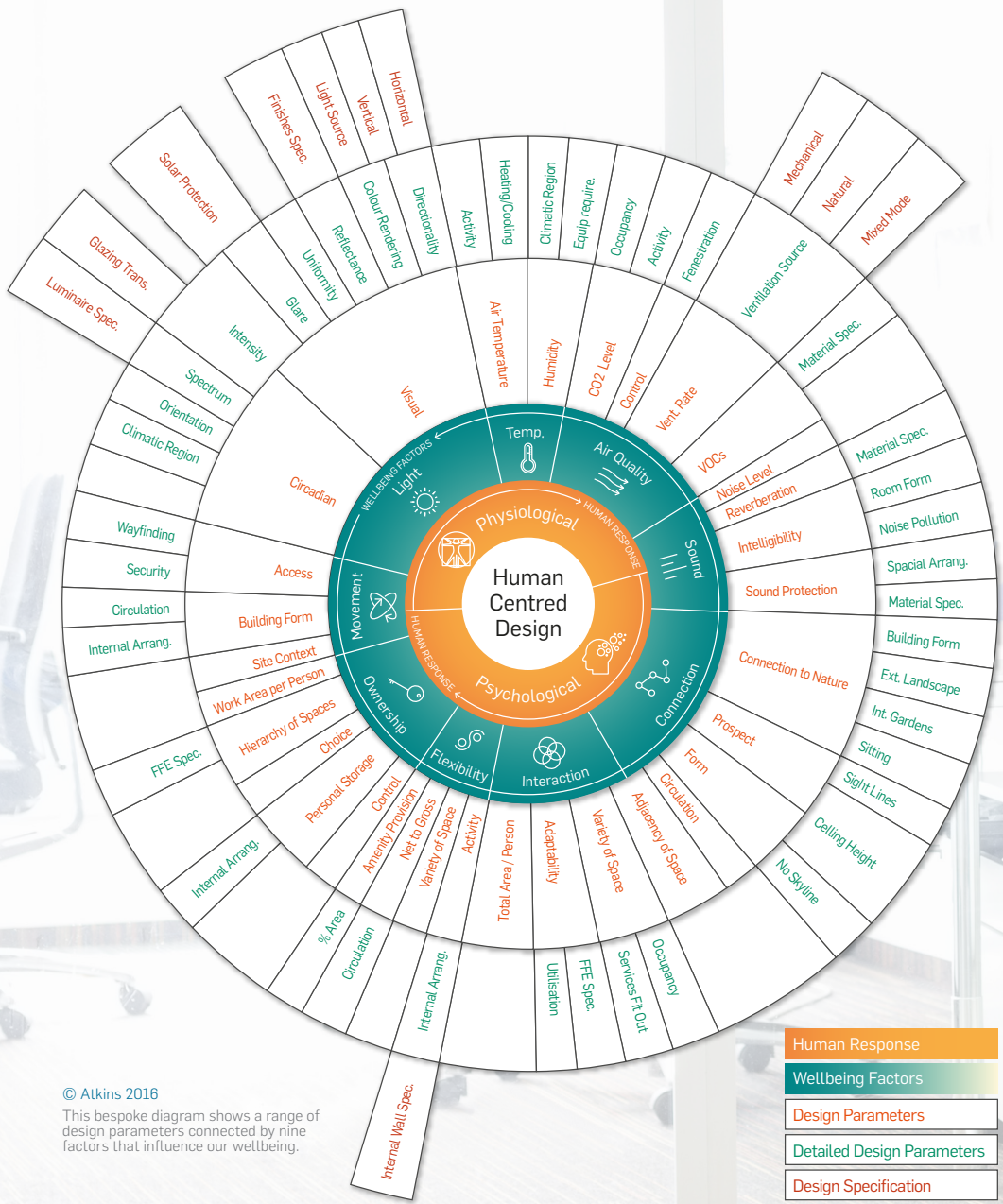
Engaging with all users

Atkins has developed an innovative engagement process and tool that enables clients and building users to prioritise aspects of the built environment that are important to their health and wellbeing. It captures these priorities in data that can be translated into a building brief and specification.

We call this process Human-Centred Design.



10% VARIATION applied equally to each cost has a far from equal impact.



© Atkins 2016
 This bespoke diagram shows a range of design parameters connected by nine factors that influence our wellbeing.

“Using Atkins Human-Centred Design tool has taken us away from the basic dialogue we often have with staff. Instead we’re having a more mature dialogue around mixed use and flexible spaces.”

Tim McIntyre-Batty
 Deputy Vice Chancellor at Bournemouth University

Value and benefit

People experience the environment in unique ways. Human-Centred Design enables these differences to be captured in an analytical process which engages with building users meaningfully. It enables those that design and commission buildings to make informed choices about key design decisions. Human-Centred Design helps ensure that the wellbeing of the building users is at the heart of the design brief. Human-Centred Design sets the pathway to a sustainable, healthy, and inspiring built environment that will help us create a healthier, more productive, higher performing society.

The Human-Centred Design approach

Atkins has developed an innovative engagement process and tool that enables clients and building users to prioritise aspects of the built environment that are important to their health and wellbeing. It captures these priorities in data that can be translated into a building brief and specification. We call this process Human-Centred Design.

The HCD online briefing tool is available to all stakeholders and users, and feeds into the briefing process. A bespoke questionnaire, developed by building design and environmental psychology experts, is the main mechanism to engage stakeholder’s wellbeing. This personalised

approach to briefing is a rigorous alternative to traditional qualitative engagement, creating balanced and comparable data.

Significantly, the HCD digital platform presents feedback in an interactive format, providing a window onto the dynamics of wellbeing related to their project. This insight is game-changing, not only for client briefing and user groups, but also as objective intelligence for the design team. This wealth of user data is translated into wellbeing impact measures which inform the selection of environmental and architectural recommendations tailored to the specific group of building users.

The HCD tool goes a step further, providing a platform for concept

design options to be analysed against the wellbeing intelligence and recommendations in context of energy and cost. HCD’s interactive platform enables real-time design changes and tests variations across building design components.

HCD places user wellbeing alongside capital and operational costs, providing unique insight into the user-environment dynamic throughout the building design and lifecycle.

Caroline Paradise
 Head of Design Research

Caroline.Paradise@atkinglobal.com
 Mobile: +44 (0) 781 231 9630